



Model No.
Lithium 40v 5 Amp Battery (LFV-B)
Lithium 40v 6 Amp Battery (LFV6-B)

STRIKEMASTER® LITHIUM 40v BATTERY QUICK START



IMAGE 1



IMAGE 2



IMAGE 3



IMAGE 4

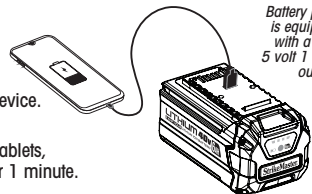
STRIKEMASTER LITHIUM 40v 5 AMP/6 AMP HOUR BATTERY

1. Remove StrikeMaster Lithium 40v Battery from carton (Image 1).
2. Unpack Battery Charging base, slide Battery onto Battery Charging Base using the channels on both sides as a guide. Press down until you hear it click in place. Leave Battery on Battery Charging Base until fully charged (Image 2).
NOTE: Battery is not fully charged when first removed from box and will not charge until Battery's core temperature is above 32°F
3. When Battery Charging Base indicator shows green, your Battery is fully charged (Image 3).
4. Once Battery is fully charged remove from Battery Charging Base. Slide battery onto Powerhead using the channels on both sides as a guide, pressing down until you hear it click in place (Image 4).

Your StrikeMaster Lithium 40v is ready for use.

USB POWER PORT (LITHIUM 40v 6-AMP LFV6-B ONLY)

- Make sure that the battery pack is charged.
- Pull the dust cover.
- Insert a USB plug into USB power port to supply power or charge your device.
- Press battery status indicator button to start charging your device.
- This battery pack can become a portable charger for charging phones, tablets, mp3 players and other mobile devices. USB shuts off when no load after 1 minute.



Battery pack is equipped with a USB 5 volt 1 amp output.

BATTERY CARE AND MAINTENANCE

1. Store Battery in a warm, dry location (35°F/ 2°C – 100°F/ 38°C).
2. **IN SEASON**
 - a. Keep Battery fully charged.
 - b. Store on a plugged in Battery Charging Base in a warm, dry location (35°F/ 2°C – 100°F/ 38°C).
3. **OFF SEASON**
 - a. Charge Battery to full.
 - b. Store Battery in a warm, dry location (35°F/ 2°C – 100°F/ 38°C), off of Battery Charging Base.
 - c. If Battery is stored for a period longer than 6 months, Battery should be recharged back to full before use.

REGISTER YOUR PRODUCT ONLINE TO ACTIVATE YOUR WARRANTY

www.rapala.com/content/rapala-brand-warranties/strikemaster-warranty.html

EXTREME COLD WEATHER OPERATION

The Lithium-Ion Battery can be used in temperatures down to (-4°F/ -20°C). If your Battery is not performing correctly, put the Battery on the Powerhead, free spin auger out and above ice for 30 to 90 seconds depending on how cold the unit is (the colder the unit, the more time to warm up). After this sequence the Battery will warm up and begin operating normally.

NOTE: Always store Battery in a warm location.